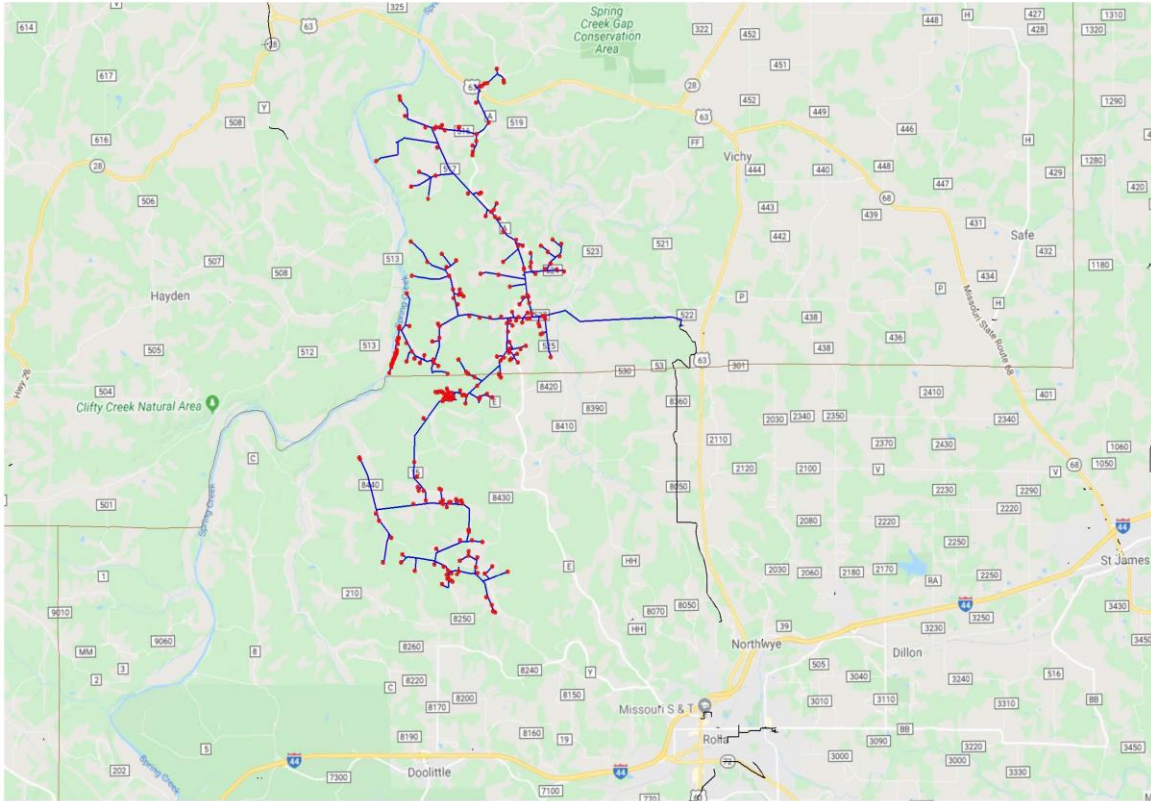


Phase 1

(Years 2020-2021)



Phase 1 lies east of Spring Creek along the Phelps and Maries County line. The service area is flanked to the north and east by Highway 63, and is 3 miles north of Doolittle, MO. Driving north from Rolla on Highway E approximately 4 miles you will enter Gascosage's territory where Phase 1 begins. At the Junction of Highway E and Highway A you can turn left to Cub Creek Science Camp or head north towards Highway 63, the northern most point of Phase 1. This phase will build 57 miles of backbone fiber and serve 285 subscribers. 3 farms and 8 businesses were identified in this area in need of reliable high-speed Internet. Subscribers will have the option to choose speeds up to 1 Gb/s symmetrical Internet along with Voice over IP services. Construction will be completed by early 2021 with services offered to certain areas beginning 4th quarter this year.