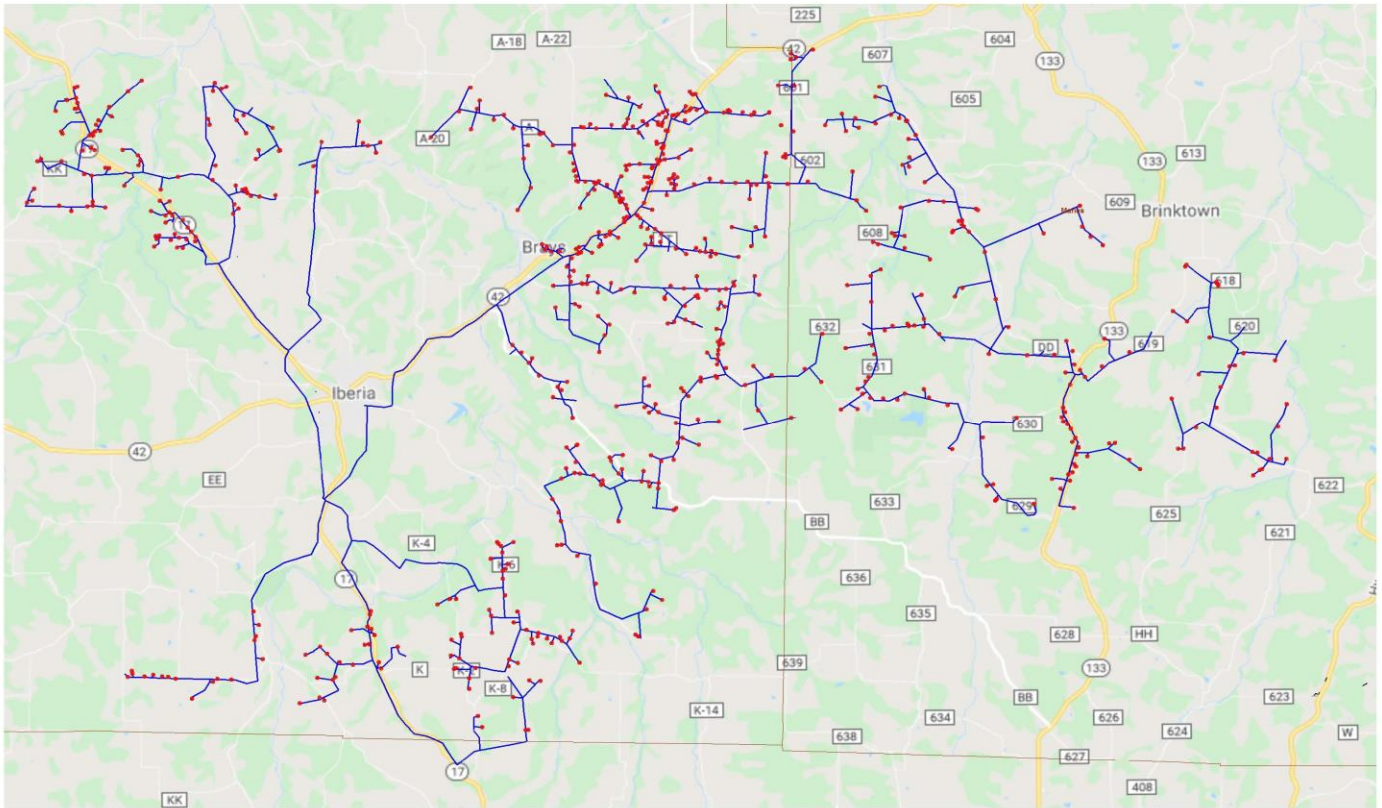


Phase 3

(Years 2022-2023)



Phase 3 is the largest buildout area and spans the southeast corner of Miller County into Maries County. In total, this Phase will install 170 miles of backbone fiber and serve 729 subscribers. Approximately 3 miles north of Iberia, MO along Highway 17 you can stop at Groves Auto Sales to purchase a vehicle or head over to the Fairview Church, both of which will benefit from this buildout as well as 110 other homes and businesses in the area. In the Madden Ford State Wildlife Area, just to the south of Iberia, MO, and following Tavern Creek East across Highway 17, 96 subscribers will receive 1 Gb/s symmetrical high-speed Internet. Lastly, from Brays, MO to Brinktown, MO 521 Farms, Businesses, and homes will gain access to Gascosage's service offerings. Phase 3 will be built over a 2-year period spanning 2022 and 2023.